



Littlehampton Primary School and Preschool

NEWSLETTER

Week 1 Term 1, 2012

Diary Dates

**Reception & Year 1
Jolly Phonics
information
3:30pm or 7 pm.**

**Preschool Acquaintance
Night, 15 February.
More information to
follow.**

**Acquaintance Night
Wednesday 15th
February
More information to
follow**

**Chaplaincy consultation
meeting
Wednesday 15th Feb.
More information to
follow.**

**Governing Council
Annual General
Meeting
13th February**

**Parents & Friends
8th February 9am in the
staffroom.**

Welcome Back to our School and Preschool for 2012!

Welcome back to parents and students. Yesterday we met for assembly at 8:50 a.m. to welcome new students and teachers and we can confirm that we are beginning the year with 354 students in the Primary School and 65 students in the Preschool. Teachers and classes in the school are as follows:

Class 1	Yr 6/7	Debbie Taylor	Room 12
Class 2	Yr 6/7	Leonie Chatfield	Room 11
Class 3	Yr 6/7	Julie Claridge	Room 8
Class 4	Yr 5	Phil Douglas	Room 5
Class 5	Yr 4/5	Alison Bishop	Room 7
Class 6	Yr 4	Narelle Thomas 4 days, Simon Munt 1 day	Room 10
Class 7	Yr 3	Sara Weston	Room 16
Class 8	Yr 2/3	Helen Kupczynski 3 days, Toni Burford 2 days	Room 14
Class 9	Yr 2	Julie Burchell	Room 13
Class 10	Yr 1	Danielle Stone	Room 15
Class 11	Yr 1	Brigitte Meyer	Room 4
Class 12	REC	Naomi Smyth 3 days, Paris Huffman 2 days	Room 3
Class 13	REC	Helen Forrest	Room 2
Class 14	REC	Lesley Hutten	Room 1



Mrs Smyth & Mrs Huffman's new students.



Mrs Hutten's class including the new students.

We welcome new teachers Julie Claridge (Year 6/7), Sarah Slee (French), Narelle Thomas (Year 4) and Paris Huffman (Reception). We welcome back teachers from last year Danielle Stone, Naomi Smyth, Helen Forrest and Helen Kupczynski who have once again won 1 year positions.

Notice that we are beginning with 3 reception classes this year. We made the decision to start the class which would have started in Term 2 one term early. This will keep our reception class numbers low for first term. More students will be joining the classes in Terms 2 & 3 and we anticipate starting a 4th class in Term 4.

Parents of Reception and Year 1 children please note; This year we are introducing a new approach to early literacy called Jolly Phonics. It is important that parents know the approaches being used so they can support their children, *so there will be special information sessions for parents of all Rec/1 students on Thursday this week.*

We remind parents that **Acquaintance Night** will be held on the evening of **February 15** which is an opportunity for all parents to meet the teachers and find out about the classroom programs. A **preschool acquaintance night** will also be held on this evening. Momentous changes will be taking place in the preschool this year, and we encourage all preschool parents and parents of 3 year olds to attend this session where two alternative models of preschool provision will be explained and parent feedback sought. We will be changing to 15 hours program provision in Term 2.

At Acquaintance Night there will be a brief meeting to answer questions about the proposed Chaplain for Littlehampton Primary School as part of Governing Council consultations.



School Fees for 2012

The school fees for 2012 have been set at \$270.

The result of the recent poll of school families was as follows:

Of 38 responses 33 families representing 46 students were FOR the increase and 5 families representing 12 students were AGAINST the increase. As a result of the poll, the principal has signed approval to increase the fees to \$270 for the 2012 school year.

We thank parents for your contributions to your child's education.

Governing Council

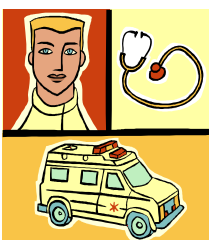
We invite all parents to our Annual General Meeting which will take place on Monday 13 February at 7:00 pm. Following this meeting we will be nominating Governing Council members for 2011. If you are interested in nominating, please ring Jenny Lewis on the school number 83911194.

Please note that Preschool parents are also eligible to nominate for Governing Council.

New Facilities

Have you noticed the footpaths along Baker Street have been re-built during the break? The new paths are in response to parent concerns about safety, and should make for much more pleasant and safe access to the school.

First Aid



If your child has a first aid plan please make sure it is up to date. Call into the office to have a look at the copy and check medication dates while you are there.

Any concerns or problems see Janelle.

WOULD YOU CONSIDER VOLUNTEERING IN THE SCHOOL?

Many parents are willing to donate an hour or two to volunteer in the school. Some opportunities are as LAP or Multilit tutor (ring and leave a message for Pauline), in our kitchen garden program (leave a message for Margie) or in the library (contact Jenny Crossley).

Kids Around Town Voucher Book



The Adelaide Edition of **Kids Around Town** Family Voucher Book is now available through Littlehampton Primary School. Save yourself \$\$\$ all year round with this family friendly Adelaide guide which includes:

- 200+ offers valued at over \$5000
- Interesting articles and handy information
- Valid to December 2012
- Only \$20 per book, with \$7.50 per book staying with the Parents & Friends team.

A copy of Kids Around Town is on display in our front office.

Information Session

**Thursday, 2nd Feb
at 3:30 p.m. or 7 p.m.**

A special information session for all parents in the five Reception and Year 1 classes will be held in the library.

Please plan to be there!

Acquaintance Night

Wednesday 15th February.

Come and meet your child/rens teacher.

More information will follow closer to the day.

Please keep the date free.

New Staff in 2012

Here are our new staff for 2012.



Julie Claridge
Year 6/7
teacher



Sarah Slee
French teacher



Narelle Thomas
Year 4 teacher










We also welcome Paris Huffman who will be team teaching with Naomi Smyth's reception class.

Community Notices

Littlehampton Netball Club Registration Day for the winter 2012 season is on Sunday 5th February 10am—12noon at Sportspower Mt Barker. \$50 deposit required.

Enquiries Kim Lawson 0419 466 938.

2012 Term 1 Calendar

	Monday	Tuesday	Wednesday	Thursday	Friday
Week 1	30/01 Welcome Back	31/01	01/02	02/02 Jolly Phonics information night. Reception & Year 1 3:30 or 7pm.	03/02
Week 2	06/02	07/02	08/02 P & F Meeting 9am in the staffroom Everyone welcome	09/02 Newsletter	10/02
Week 3	13/02 Governing Council AGM 7pm	14/02	15/02 Preschool & School Acquaintance Night For all year levels.	16/02 Assembly 2:25pm in the gym Parents welcome	17/02
Week 4	20/02	21/02	22/02	23/02 Newsletter	24/02
Week 5 Swimming week 	27/02	28/02	29/02	01/03 Courier Cup SAPSASA Swimming carnival	02/03 Clean up Australia 
Week 6 Swimming week 	05/03	06/03 Choir Cluster here 	07/03	08/03 Assembly 2:25pm in the gym Parents welcome Newsletter	09/03
Week 7 	12/03 Adelaide Cup public holiday	13/03	14/03 P & F Meeting 9am in the staffroom Everyone welcome	15/03  Year 6/7 Aquatics Camp	16/03 Year 6/7 Aquatics Camp 
Week 8	19/03 Governing Council	20/03	21/03	22/03 Police Band visiting  Newsletter	23/03
Week 9	26/03 Parent Teacher Interviews	27/03 Parent Teacher Interviews	28/03 Parent Teacher Interviews	29/03 Assembly 2:25pm in the gym Parent Teacher Interviews	30/03
Week 10	02/04	03/04	04/04 Likely date for Sports Day.	05/04 Last day of term 1 Students dismissed at 2.15. Newsletter	06/04  Good Friday

Please note: Swimming timetable in week 5 & 6 is as follows;

Week 5 morning– Mrs Forrest , Danielle, Mrs Burchell and Ms Bishop’s classes. **Week 5** afternoon session. Mrs Hutten, Miss Meyer, Mrs Kupeczynski and Mrs Thomas’s classes. **Week 6** morning session Mrs Smyth, Sara and Mr Douglas's classes. More details to follow.

SCHOOL UNIFORM

School Governing Councils in SA Government Schools have the right to determine school dress policy in line with DECS administration guidelines and instructions. This school community voted for a compulsory school uniform policy in 1999. This was revised in 2011 by Governing Council and the following rules now apply.



Boys:

- Pale blue or navy short or long sleeve polo shirt with logo (screen printed or iron-on available from front office).
- Embroidered polar fleece part zip jumper or full zip jacket without hood.
- Navy long sleeve rugby top with white collar and school logo.
- Navy zip-up spray jacket.
- Year 6/7 Seniors embroidered polo top, navy with blue and white trim.
- Year 7 special windcheater with LITTLEHAMPTON embroidered in electric blue.
- Pale blue, navy or white skivvy to wear under long sleeve polo shirt.
- Plain navy or grey shorts, knee length.
- Plain full-length navy or grey trousers or navy track pants (please note no grey track pants).
- Plain navy broad brim or legionnaire's hat with screen-printed logo.
- Plain navy, grey or white socks.

Girls:

- Pale blue or navy short or long sleeve polo shirt with logo (screen printed or iron-on available from front office).
- Embroidered polar fleece part zip jumper or full zip jacket without hood.
- Navy long sleeve rugby top with white collar and school logo.
- Navy zip-up spray jacket.
- Year 6/7 Seniors embroidered polo top, navy with blue and white trim.
- Year 7 special windcheater with LITTLEHAMPTON embroidered in electric blue.
- Pale blue, navy or white skivvy or white long sleeve polo shirt to wear under winter school dress.
- Plain navy shorts, knee length.
- Plain navy 'skort' or skirt (>15 cm above floor and <15 cm above knee)
- Plain full-length navy trousers or navy track pants (please note no grey track pants).
- Summer check school dress (<15 cm above knee).
- Winter check pinafore or skirt (>15 cm above floor and <15 cm above knee).
- Navy tights (no leggings please).
- Plain navy broad brim or legionnaire's hat with screen-printed logo.
- Plain navy, grey or white socks.

Please note that pants under skirts and dresses are not suitable. Girls can wear tights or socks. If shorts are worn under skirts for modesty, they must not be visible. Singlets may be worn under school shirts, but must not be visible at the neck or waist.

Shoes:

All school footwear needs to be sturdy and suitable for fitness and sport every day:

- Lace-up or Velcro sport sneakers predominately in school uniform colours.
- Black or navy blue school shoes.
- Black or navy blue sturdy school sandals.

No flat-bottomed skate shoes, canvas shoes, or light-weight dress shoes or sandals please.



Jewellery and accessories:

No make-up or decorative jewelry, including bracelets, necklaces or rings. The only acceptable items are:

- Wristwatches.
- Plain single earrings in navy, pale blue, white or gold / silver in small studs or plain sleepers only.
- Plain hair accessories in navy, pale blue, white or hair tone without pattern, or in school uniform fabric.
- Plain scarves in navy, pale blue or white without pattern.

Please note that 'plain' for all items above means no logo or branding, no decoration, no stripes, no pattern of any kind.